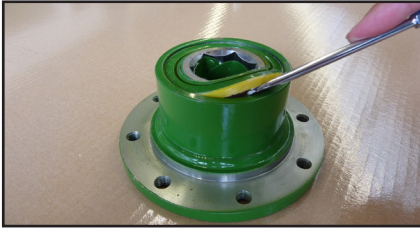


**REPARATURANLEITUNG  
REPAIR INSTRUCTIONS**

**SPERRKEIL- FREILAUFKUPPLUNG  
KEY-TYPE OVERRUNNING CLUTCH**

EF5/1

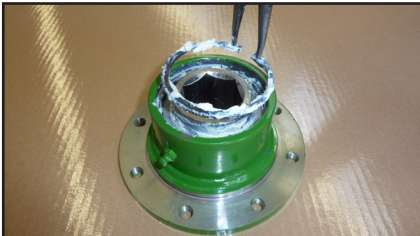




## DEMONTAGE - DISMANTLING

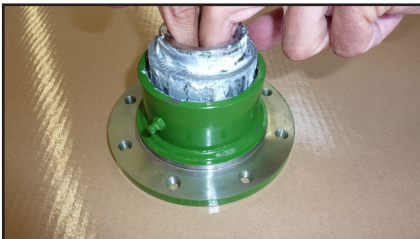
Dichtring abheben.

Remove sealing ring



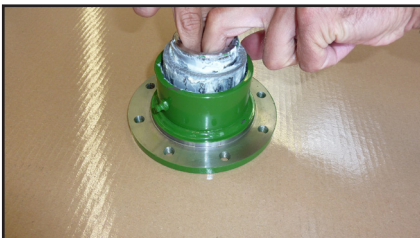
Sicherungsring demontieren.

Remove the retaining ring.



Nabe mit Stützscheibe ggf. Passscheiben, Sperrkeilen und Blattfedern aus dem Kupplungsgehäuse herausnehmen.

Take hub with supporting ring, shims (if applicable), locking keys and leaf springs out of the clutch housing.



## MONTAGE - ASSEMBLY

Gefettete Nabe ins Kupplungsgehäuse schieben.

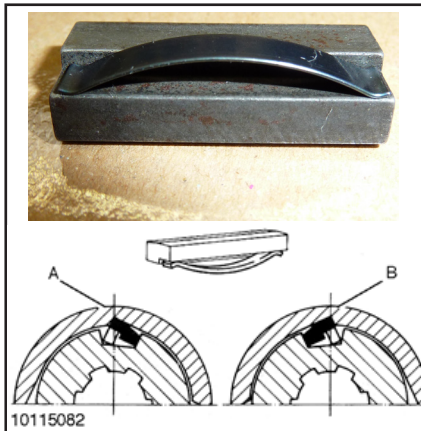
Insert greased hub into the clutch housing.



Sperrkeile und Blattfedern in die Nut der Nabe schieben.

Insert locking keys and leaf springs in the groove of the hub.

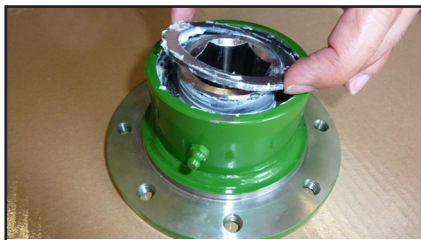
# REPARATURANLEITUNG REPAIR INSTRUCTIONS



**ACHTUNG!** Lage der Sperrkeile und der Blattfedern beachten!

**CAUTION!** Ensure correct position of keys and leaf springs.

A	B
Rechtsdreh Sinn	Links dreh Sinn
Right-hand rotation	Left-hand rotation



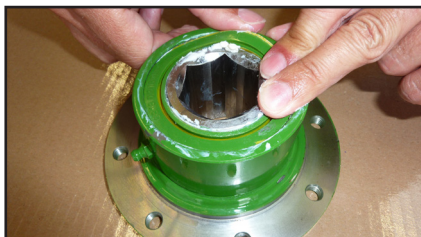
Stützscheibe und ggf. Passscheiben auflegen.

Insert supporting ring and shims (if applicable).



Sicherungsring montieren.

Mount retaining ring.



Dichtring montieren.

Mount sealing ring.

**WALTERSCHEID**

WALTERSCHEID GMBH  
Hauptstraße 150  
D-53797 Lohmar  
Tel: +49 2246 12-0  
Fax: +49 2246 12-3501  
[www.walterscheid.com](http://www.walterscheid.com)

