

FORCED STEERING PARTS

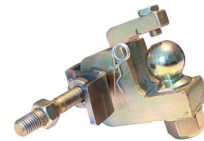
for drawbars KK80 and frames

- | | | | |
|--|---|--------------------------------------|---|
| ▶ ZWL-KBA-KU
item no. 8004771 |  | ▶ 50-300
item no. 8002496 |  |
| ▶ 50-15-304
item no. 8004444 |  | ▶ 50-310
item no. 8002497 |  |
| ▶ 50-15-304W15
item no. 8004539 |  | ▶ 50-320
item no. 8002498 |  |
| ▶ ZWL30KU-AS
item no. 8004824 |  | ▶ ZWL303M
item no. 8004977 |  |
| ▶ ZWL30W15KU-AS
item no. 8004825 |  | ▶ ZWL303L
item no. 8004978 |  |

FORCED STEERING PARTS

for KBA8322 - KBA8335

- ▶ **50-15**
item no. 8002213



MOUNTING EXAMPLES



KK80 ball is replaceable up to 2x

series KU2000 with 360° free turnable pin



WALTERSCHEID – YOUR PARTNER ON THE TRACTOR REAR

Hydraulic toplinks with original Walterscheid hook, lower link hooks operated from the driver's seat, hydraulic lateral stabilizers for a safe and comfortable work in difficult terrain – only a few milestones in the world of coupling technology developed by Walterscheid within the last 30 years.

The integration of the former Walterscheid Cramer GmbH is another highlight and a big step forward on our track to bringing more convenience and safety into agricultural business. A wide range of coupling ladders including different inserts made Walterscheid into a full service provider for high quality coupling systems for tractors and self-propelled equipment. Focussing on safe and convenient coupling systems makes us an ideal partner for OEMs and farmers.

Walterscheid – we take agriculture forwards!

Off-Highway Powertrain Services Germany GmbH

Heiligenstädter Straße 17a
D-37351 Dingelstädt
phone: +49 36075 573-0
fax: +49 36075 573-23

hitches@walterscheid.com
www.walterscheid.com

For more information and technical details please call our hotline or download the latest version of the couplings catalogue on www.walterscheid.com

WALTERSCHEID GMBH

Hauptstraße 150
D-53797 Lohmar
Tel: +49 2246 12-0
Fax: +49 2246 12-3501

www.walterscheid.com

WALTERSCHEID

We reserve the right to change without prior consultation. Use products only for the specified applications. We only guarantee constant quality. Reproduction, even in part, is only authorised with the written consent of Walterscheid GmbH.

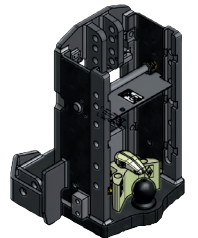
WALTERSCHEID
POWERTRAIN GROUP

WALTERSCHEID

WALTERSCHEID COUPLING SYSTEMS FOR CLAAS TRACTORS

CLAAS

SERIES
Ares/Atlas
Arion/Axion/Axos
Celtis
Scorpion
Xerion



TCR 00168 0112 XX.XX ©Printed in Germany

FRAMES

ADJUSTABLE MODELS

DRAWBARS WITH BALL

DRAWBARS WITH PITON

Series Atlas 900

- ▶ **KU301ALX**
rail size W=322/30/22 mm – 8 H
item no. 8002733
- ▶ **KU301XKK**
rail size W=322/30/22 mm – 6 H
item no. 8002735
- ▶ **KU301BF**
rail size W=322/30/22 mm – 5 H
item no. 8002734



Series Ares 500/600 Arion 400/500 and 600

- ▶ **KU303L**
rail size W=335/30/22 mm – 8 H
item no. 8002606
- ▶ **KU303KK**
rail size W=335/30/22 mm – 6 H
item no. 8002736
- ▶ **KU303F**
rail size W=335/30/22 mm – 5 H
item no. 8004619



Series Ares 800 Axion 800

- ▶ **KU304L**
rail size W=335/30/22 mm – 8 H
item no. 8002608
- ▶ **KU304KKL**
rail size W=335/30/22 mm – 6 H
item no. 8002908
- ▶ **KU304F**
rail size W=335/30/22 mm – 5 H
item no. 8002607



Series Celtis 400

- ▶ **KU375L1**
rail size W=335/30/22 mm – 8 H
item no. 8002744
- ▶ **KU375K**
rail size W=335/30/22 mm – 8 H
item no. 8002743



reference	rail size (mm)	item no.
KU2000/314NB	314/30/20	8004322
KU2000/322XB	322/30/22	8005104
KU2000/329NBFBF*	329/32/25	8004342
KU2000/335NB	335/30/22	8004182
KU2000/389XB	389/32/25	8005155



37mm spherical

KU5410/314	314/30/20	8004702
KU5410/322	322/30/22	8003698
KU5410/329*	329/32/25	8003699
KU5410/335	335/30/22	8003700
KU5410/389	389/32/25	8005153



31mm cylindrical

KU2000/314NA5	314/30/20	8004686
KU2000/322NA5	322/30/22	8004189
KU2000/329NA5*	329/32/25	8004283
KU2000/335NA5	335/30/22	8004284
KU2000/389XA5	389/32/25	8005156



32mm cylindrical

KB8314	314/30/20	8004705
KB8322	322/30/22	8002578
KB8329*	329/32/25	8002579
KB8335	335/30/22	8002580
KB8389	389/32/25	8004858



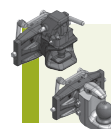
KI8314	314/30/20	8002587
KI8322	322/30/22	8002588
KI8329*	329/32/25	8002589
KI8335	335/30/22	8002590



PB5314N	314/30/20	8004746
PB5322N	322/30/22	8003247
PB5329N*	329/32/25	8003248
PB5335N	335/30/22	8003249
PB5389N	389/32/25	8005143



*properly for XERION 2500/3000/3300/3800

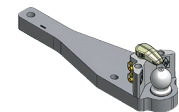


Walterscheid couplings are made for heavy duty work and mostly in use of forged parts



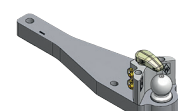
Series Atlas 900

- ▶ **KBA8301ALX**
straight
item no. 8003679

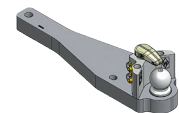


Series Ares 500/600 Arion 400/500 and 600

- ▶ **KBA8303LB**
straight
item no. 8002929

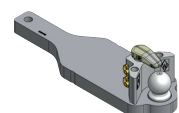


- ▶ **KBA8303FB**
straight
item no. 8002930

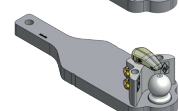


Series Ares 800 Axion 800

- ▶ **KBA8304LB**
straight
item no. 8003283

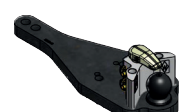


- ▶ **KBA8304FB**
straight
item no. 8004453



Series Ares 500/600 Arion 400/500 and 600 till 2009

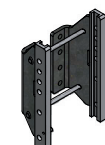
- ▶ **KBA8303M**
straight, 2 positions
item no. 8003286



MORE MODELS

Telehandler Scorpion 6030 – 9040

- ▶ **KU358L**
rail size W=309/30/22 mm – 6 H
item no. 8004570

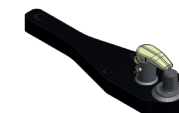


newest flexing-technology and modular design for flexible part design



Series Ares 500/600 Arion 400/500 and 600

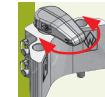
- ▶ **PBA5303L**
straight
item no. 8005131



Series Ares 500/600 Arion 400/500 and 600 till 2009

- ▶ **PBA5303M**
straight, 2 positions
item no. 8005132




 forged tool-free downholder for compensation of high negative charges
 360° free turnable for free sight
 forged catch device with centering function

